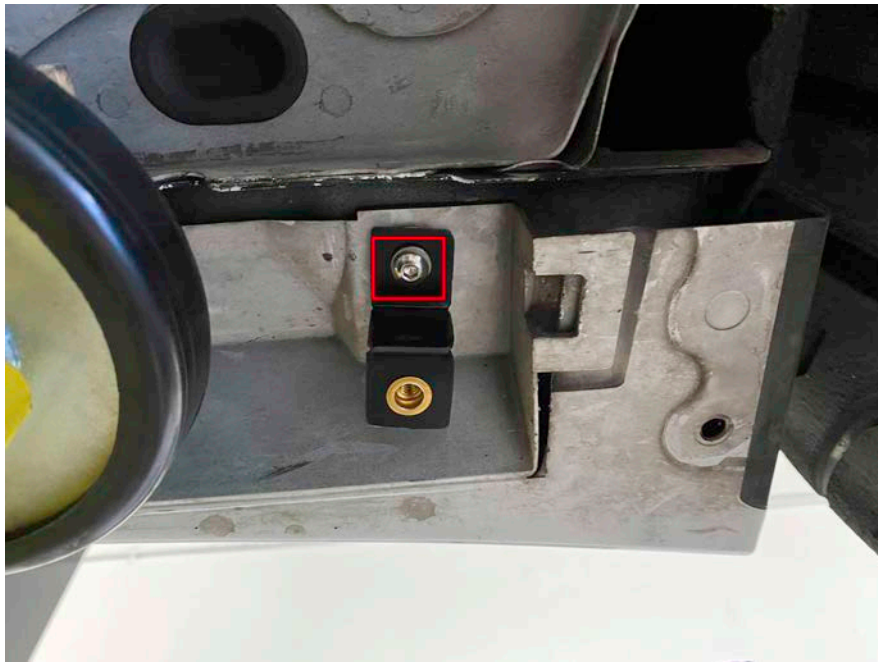
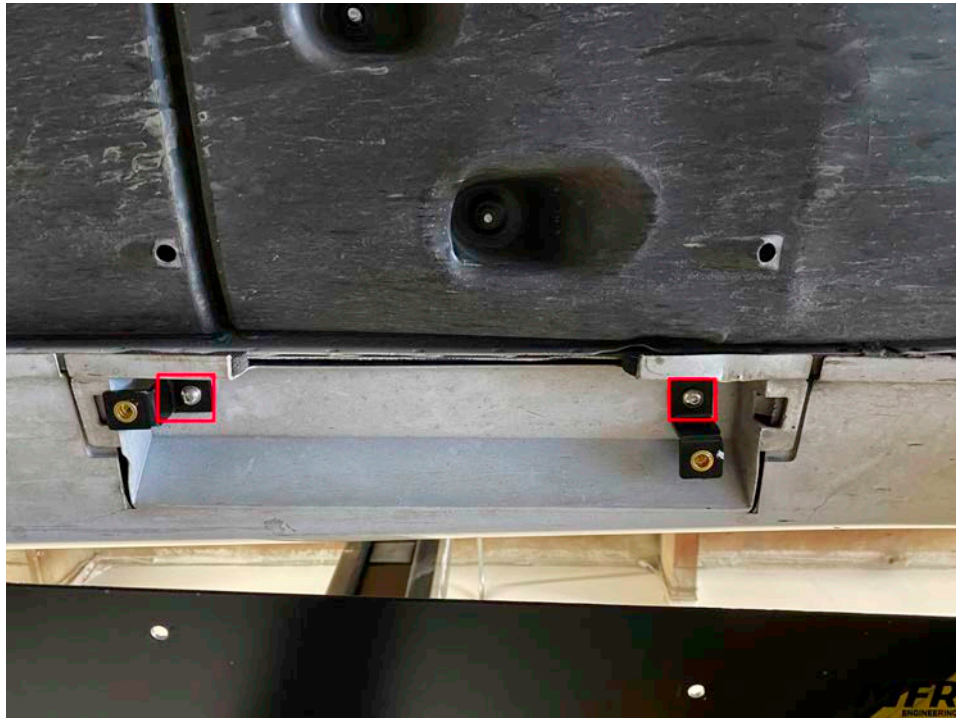


LEXUS ISF SIDE SKIRTS INSTALL GUIDE

- 1) Remove OEM pushclips with provided rivnuts where each brackets goes. Bracket locations shown below.





2) Install the sideskirts using the provided bolts. Screw in all the bolts lightly and then tighten once every bolt is lined up with a few threads in the rivet nut.

